

Ryder Street

CARDIFF, CF11 9BU

GUIDE PRICE £725,000

Hern &
Crabtree



Ryder Street

A handsome bay-fronted period three-bedroom home, beautifully presented throughout. The interiors have been styled in a distinctive maximalist yet relaxed palette, with colour drenching, moody ink tones and warm earthy neutrals creating spaces that feel both elegant and inviting. Two reception rooms to the front of the house provide a wonderful sense of period grandeur, each centred around wood burning stoves and framed by original fireplaces, cornicing and picture rails.

To the rear, the house opens into a remarkable kitchen and dining space designed for everyday living and entertaining alike. Bespoke cabinetry, integrated appliances and a thoughtfully designed seating nook sit alongside large windows and doors that draw natural light deep into the room and connect seamlessly with the garden beyond.

Upstairs, the bedrooms retain the charm of the home's period heritage while offering generous proportions and fitted storage. Stylish bathrooms have been finished to a high standard, several benefiting from underfloor heating for added comfort.

Ryder Street sits within the heart of Pontcanna, widely regarded as one of Cardiff's most vibrant and characterful neighbourhoods. Tree lined streets are moments from independent cafés, restaurants and artisan shops along Pontcanna Street and Cathedral Road. The green open spaces of Pontcanna Fields and Bute Park are within easy walking distance, offering miles of parkland and riverside walks. The area is well regarded for its access to excellent schools and enjoys convenient transport links to Cardiff city centre, Cardiff Central railway station and the M4 corridor.



1870.00 sq ft

Entrance Porch

Entered via a traditional wooden door with etched glass and matching glazed panels to the side and above. The porch has half height tiled walls and a tiled floor, providing a characterful introduction to the home.

Entrance Hall

A welcoming hallway rich in period detail including egg and dart corning, decorative ceiling with arch detail and picture rail. Stairs rise to the first floor with traditional wooden handrail and spindles, along with dado rail and stripped wooden flooring. Doors lead to the principal reception rooms and a glazed door opens to the kitchen diner.

Living Room

An elegant bay fronted reception room with wood sash bay windows featuring stained glass detailing above. The room retains a picture rail and ceiling rose, while a marble mantelpiece frames a cast iron wood burning stove set within exposed brickwork and a slate hearth. Bespoke cabinetry with shelving is built into the alcoves and the room is finished with stripped wooden flooring and a vertical radiator.

Sitting Room

A second beautifully presented reception room with coved ceiling, ceiling rose and picture rail. A cast iron wood burning stove with wooden mantelpiece, exposed brickwork and slate hearth forms the focal point. Bespoke glass display cabinet is fitted into one alcove and French glazed wooden doors lead through to the home office.

Home Office

A practical workspace with spotlights and tiled flooring. Double glazed door and window overlook the rear garden and a useful storage cupboard is fitted. An internal window connects the space visually to the kitchen area.

Kitchen/Diner

A striking open plan kitchen and dining space forming the heart of the home. A bespoke seating nook sits beside large windows overlooking the garden and a sliding window which opens back to the outside. The kitchen is fitted with a range of wall and base units with complementary worktops and integrated Neff appliances including induction hob with extractor hood, dishwasher, combination oven, fridge freezer and pull out larder storage. A one and a half bowl sink with mixer tap sits beneath the window. Feature lighting, ceiling speakers and Amtico flooring complete the space. There is also a useful storage cupboard beneath the stairs. The kitchen and dining area benefits from electric underfloor heating.

Utility Room

Accessed from the kitchen diner and fitted with wall and base units, worktop space and a one and a half bowl sink with swan neck mixer tap. Plumbing is provided for a washing machine and the gas combination boiler is concealed within a cupboard. A skylight provides natural light and a door leads out to the rear garden.

Shower Room

A spacious wet room style shower room with vaulted ceiling and skylight window. Fitted with a wall hung WC, wash basin, walk in shower with glass screen and rainfall shower head with separate mixer. Heated towel rail, illuminated mirror, tiled flooring and part tiled walls. Electric underfloor heating.

First Floor Landing

Stairs rise from the entrance hall with painted wooden staircase and central carpet runner. The landing has a dado rail and banister and provides access to the bedrooms, bathroom and separate WC. Further stairs lead to the loft room.

Bedroom One

A generous principal bedroom with wood sash bay window to the front featuring fitted plantation shutters. The room includes bespoke fitted wardrobes within the alcoves and an additional wardrobe to one side. A feature cast iron fireplace with mantelpiece adds further character alongside picture rail and coved ceiling.

Bedroom Two

A well proportioned double bedroom with wood sash window overlooking the rear garden. Fitted wardrobes are set within the alcoves and the room retains stripped wooden flooring, picture rail and coved ceiling.

Bedroom Three

A comfortable bedroom with wood sash window to the rear and vertical radiator. Door leads to an ensuite shower room.

En Suite

Fitted with a wall hung wash basin with tiled splashback, WC and walk in shower with glass screen and rainfall shower head with separate mixer. Heated towel rail, illuminated mirror, wood effect tiled flooring and electric underfloor heating.

Family Bathroom

A stylish bathroom with bath and glass screen with shower over and central wall mounted bath filler tap. Wash basin sits on a marble countertop with bespoke period wooden storage cabinet beneath. Wall lights, heated towel rail, tiled flooring and part tiled walls. Electric underfloor heating.

Separate WC

Located off the landing with obscure window to the side, wash basin and WC.

Loft Room

Stairs rise from the first floor landing to a versatile loft room with skylight windows to the front and rear. The room provides excellent head height and useful storage within the eaves. An ideal guest room, home office or snug.

Front Garden

A charming courtyard style frontage enclosed by a low hedge and wrought iron gate. Paved with traditional stone slabs and a tiled pathway leading to the front door.

Rear Garden

The landscaped rear garden can be accessed from the kitchen diner, office and utility room. A slate paved patio provides space for outdoor seating with raised sleeper beds filled with mature planting. The garden continues to a stone chipping seating area with further planting borders and a timber storage shed. A roller shutter door provides access to the rear lane.

Additional Information

Freehold. Council Tax Band G (Cardiff). EPC rating D.

Disclaimer

Property details are provided by the seller and not independently verified. Buyers should always seek their own legal and survey advice prior to exchange of contracts. Descriptions, measurements and images are for guidance only. Marketing prices are appraisals, not formal valuations. Lease information, including duration and costs have been provided by the seller and have not been verified by H&C. Hern & Crabtree accepts no liability for inaccuracies or related decisions that may result in financial loss we recommend you seek advice from your legal conveyancer to ensure accuracy.

Please note: Buyers are required to pay a non refundable AML administration fee of £24 inc vat, per buyer after their offer is accepted to proceed with the sale. Details can be found on our website.

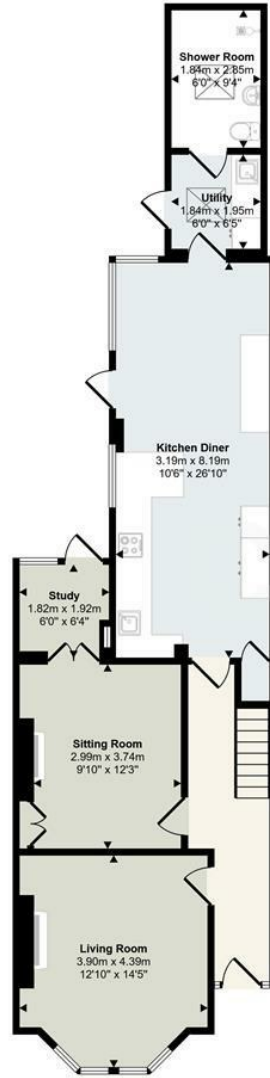




Approx Gross Internal Area
174 sq m / 1870 sq ft



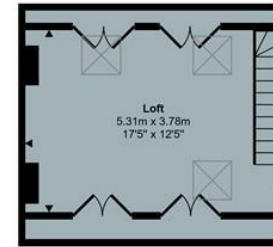
Energy Efficiency Rating		Current	Potential
<i>Very energy efficient - lower running costs</i>			
(92 plus)	A		86
(81-91)	B		
(69-80)	C		
(55-68)	D	55	
(39-54)	E		
(21-38)	F		
(1-20)	G		
<i>Not energy efficient - higher running costs</i>			
England & Wales			EU Directive 2002/91/EC



Ground Floor
Approx 80 sq m / 858 sq ft



First Floor
Approx 69 sq m / 741 sq ft



Second Floor
Approx 25 sq m / 271 sq ft

This floorplan is only for illustrative purposes and is not to scale. Measurements of rooms, doors, windows, and any items are approximate and no responsibility is taken for any error, omission or mis-statement. Icons of items such as bathroom suites are representations only and may not look like the real items. Made with Made Snappy 360.

Good old-fashioned service with a modern way of thinking.



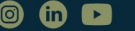
Hern & Crabtree

02920 228135

pontcanna@hern-crabtree.co.uk

hern-crabtree.co.uk

87 Pontcanna Street, Pontcanna, Cardiff, CF11 9HS



The property title and lease details (including duration and costs) are provided by the seller and have not been independently verified by Hern and Crabtree. We recommend consulting your legal representative to verify all details before exchanging contracts. All descriptions, measurements, and floor plans are intended as a guide and may not fully represent the property's current condition. Photographs may be edited for marketing purposes. Prospective buyers should verify all details and personally inspect the property. Hern and Crabtree cannot accept responsibility for inaccuracies or discrepancies. We do not test property systems, appliances, or services, and any condition opinions are based on industry experience, not formal surveys. Buyers should seek independent inspections, surveys, and legal advice. Marketing figures, including asking prices, are market appraisals based on available information and market conditions, not formal valuations. Vendors set asking prices, which may differ from valuations for mortgage or survey purposes. Hern and Crabtree is not liable for discrepancies or any losses resulting from sale or purchase withdrawals. By proceeding with a purchase, you confirm you have read and understood this disclaimer.